

How to track Omnitracs integrated carriers

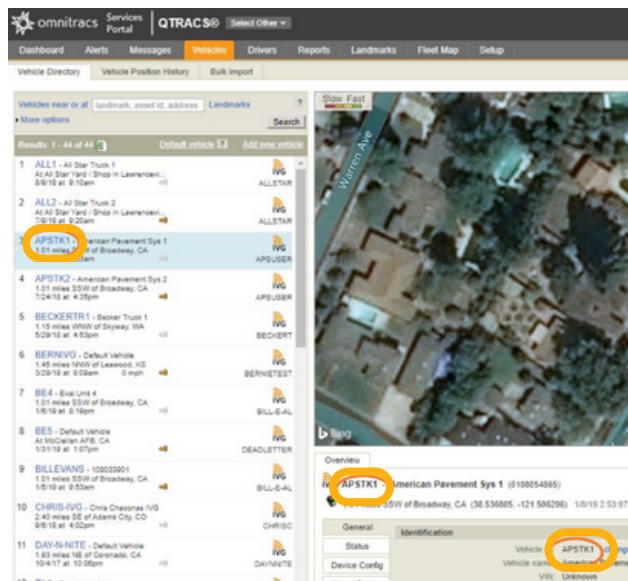
Omnitracs requires a **vehicle ID** instead of a truck number to successfully initiate tracking. Omnitracs also does not permit access to the list of vehicle IDs for a carrier.

Please have the carrier follow the steps below on how to obtain their vehicle IDs.

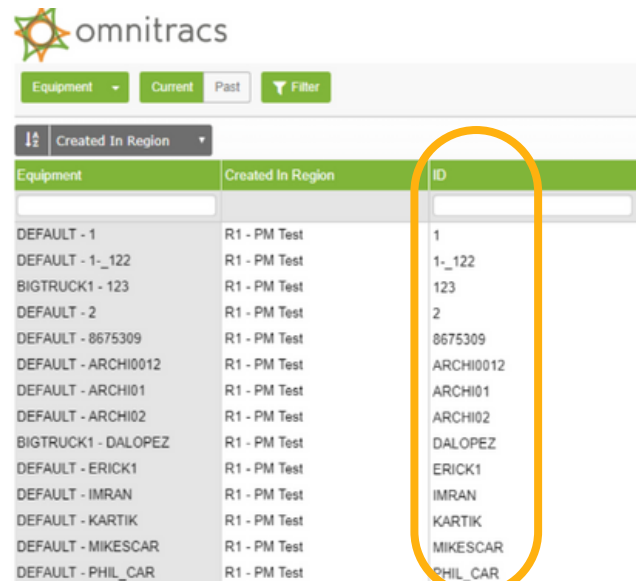
1 Carrier obtains the vehicle ID for the load

The Vehicle ID is the highlighted value in the screenshots for each platform type below.

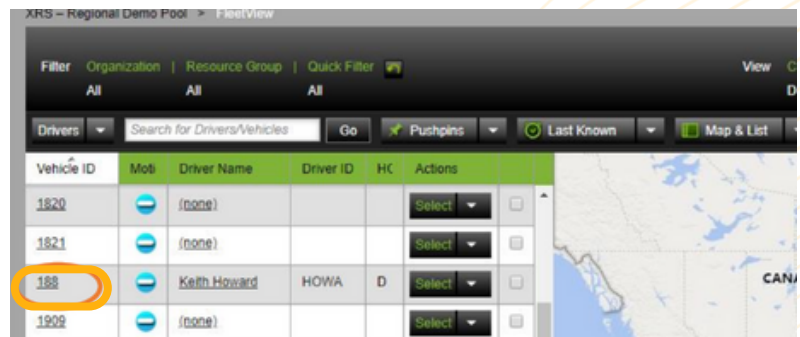
Enterprise Services – QTRACS system (IVG/MCP users)



Roadnet – Fleetview
(Omnitracs/Roadnet Telematics, RDC, XRS Relay)



XRS Relay – Fleetview



Trucker Tools Tip

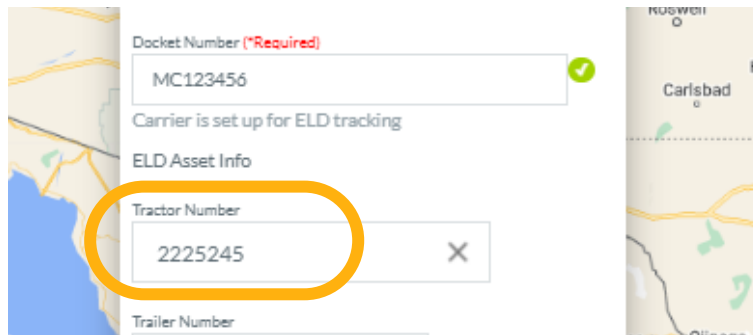


Download a list of the vehicle IDs to share with brokers so they can easily reference the correct value for load tracking!

How to track Omnitracs integrated carriers

Input the vehicle ID in the truck number field

- 2 Replace the existing truck number either in your TMS or in the Load Track portal with the vehicle ID as provided to you by the carrier. Tracking will initiate within 10 - 15 minutes. If the vehicle ID is invalid, you'll receive an error that the asset ID is invalid.



The screenshot shows a web form titled "ELD Asset Info". It includes a "Docket Number (*Required)" field with the value "MC123456" and a green checkmark icon. Below it is a status message: "Carrier is set up for ELD tracking". The "Tractor Number" field is highlighted with a yellow circle and contains the value "2225245". There is a green checkmark icon to the right of this field. Below the tractor number is a "Trailer Number" field. The form is overlaid on a map background showing a location near Carlsbad.